
Johanson Technology Inc.

JTI Library Installation Instructions for ADS 2011.10

Overview

- These instructions will briefly cover the installation of Johanson Technology libraries for Agilent's Advanced Design System (ADS) version 2011.10

Requirements

- Agilent ADS 2011.10
- Johanson Technology Inc. libraries
 - Libraries located on
 - ADS Designer Libraries
(<http://www.johansontechnology.com/designer-libraries/agilent-ads-libraries.html>)

Important Notes

- During testing of libraries, it was observed file paths with spaces (e.g. c:\folder here\libraries) caused trivial errors

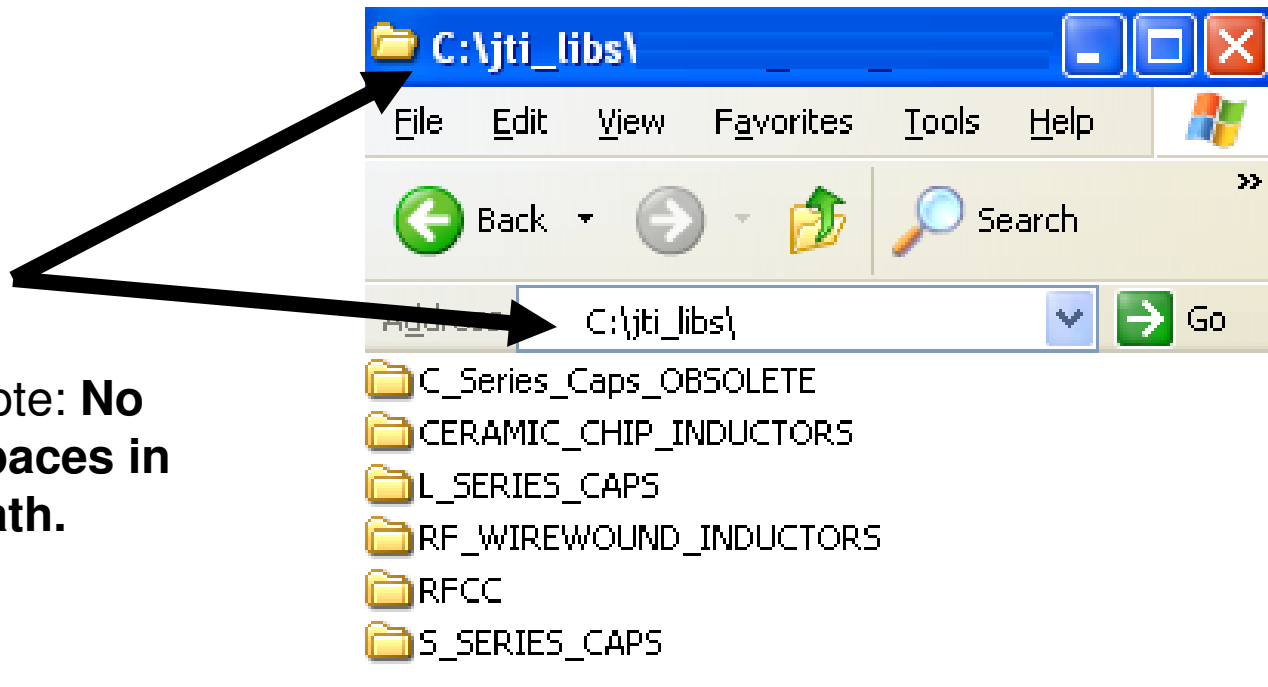


There is a 'space' character between 'folder' and 'here'.

- It is highly recommended to download and save libraries in a root folder with no spaces (e.g. c:\jti\...)

Download and Unzip

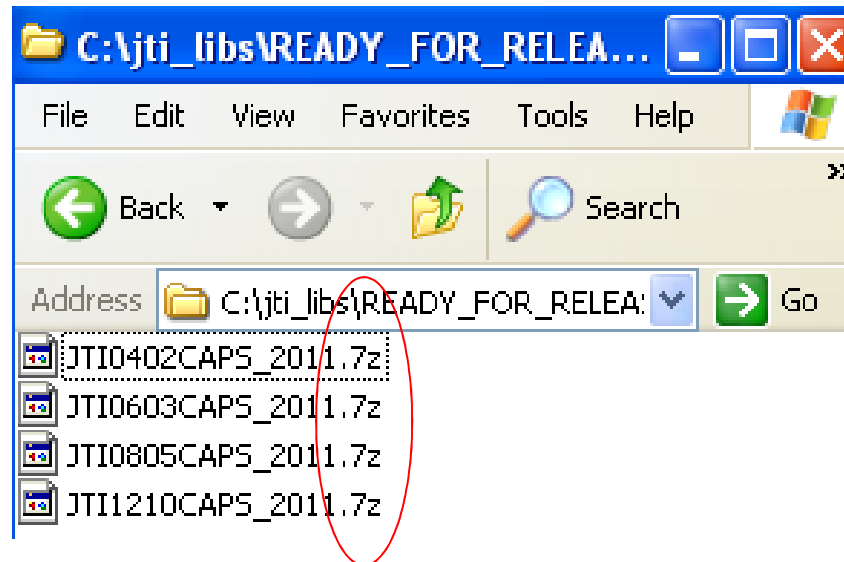
- Download all libraries from Johanson Technology website
- Files will need to be unzipped. Folder will look similar to the example below.



Note: No spaces in path.

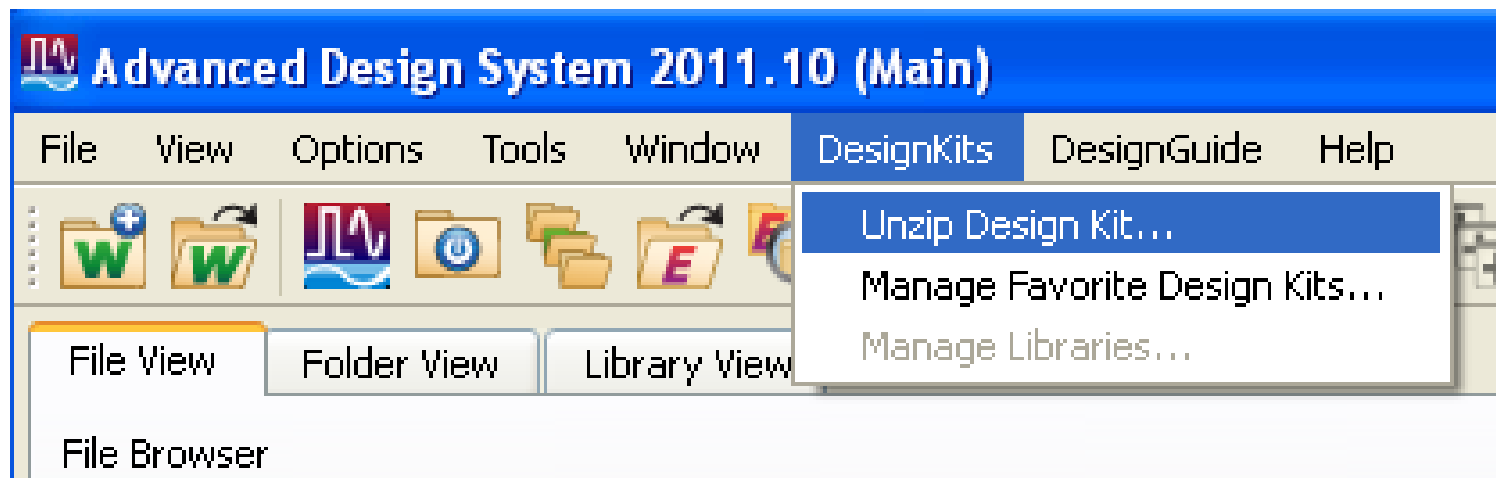
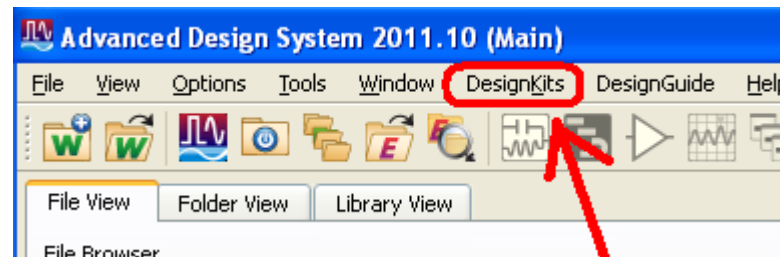
Check Unzipped

- Once all files have been unzipped, check libraries are inside each folder.
 - Libraries will have the extension *.7z
 - (7-Zip is a file archiver with high compression ratio, see <http://www.7-zip.org/>).
- Do not unzip *.7z files.



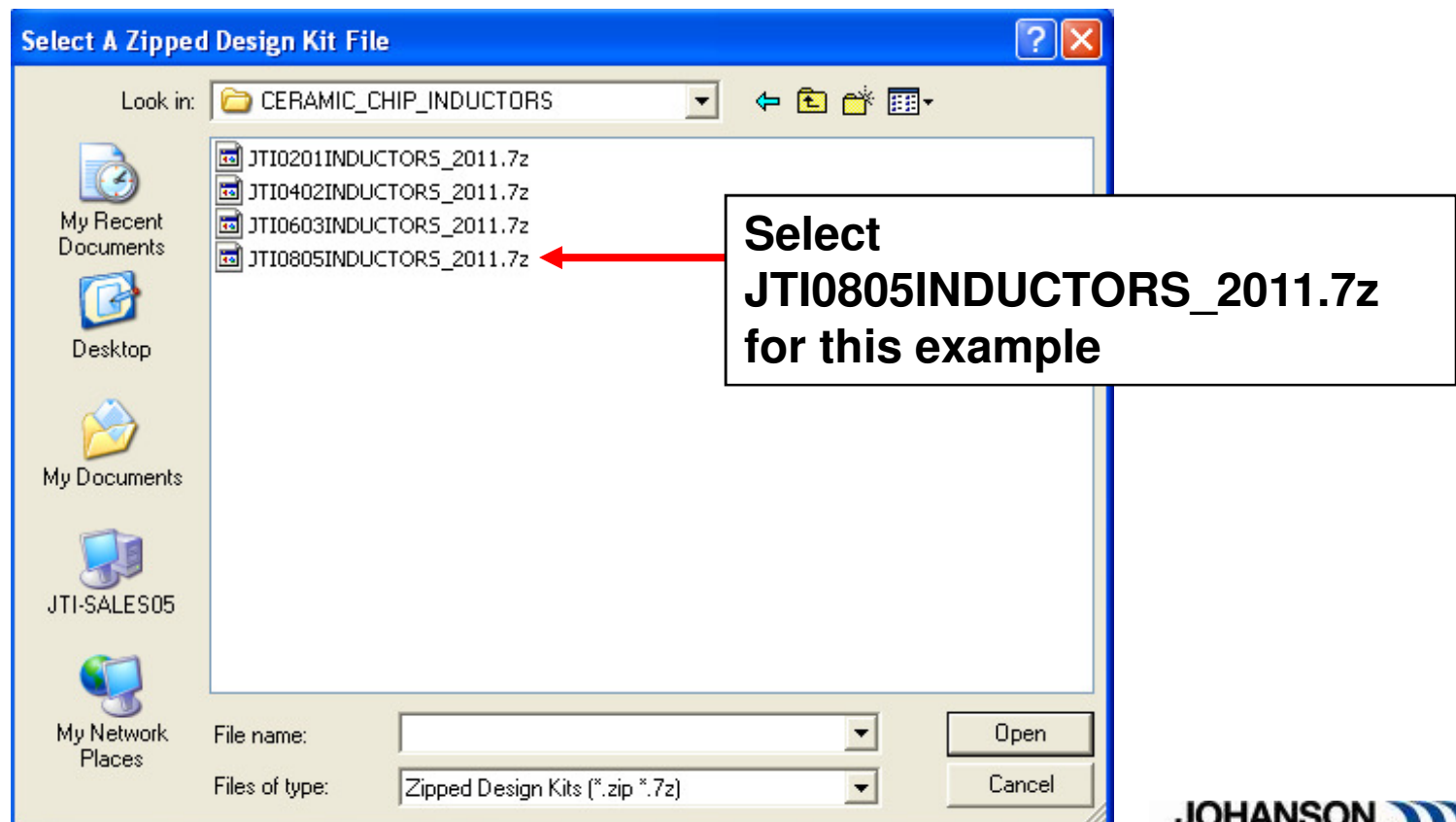
Installing Files in ADS 2011.10

- Launch ADS 2011.10
- In the ADS main window click on “DesignKits” and Select “Unzip Design Kit...”



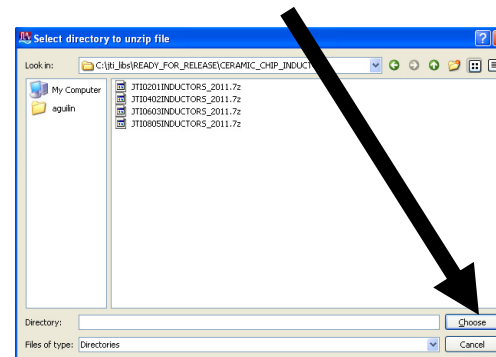
Browse for Zipped Design Kit File

- A browse window will appear. Look for the JTI libraries which were downloaded and unzipped to *.7z format.



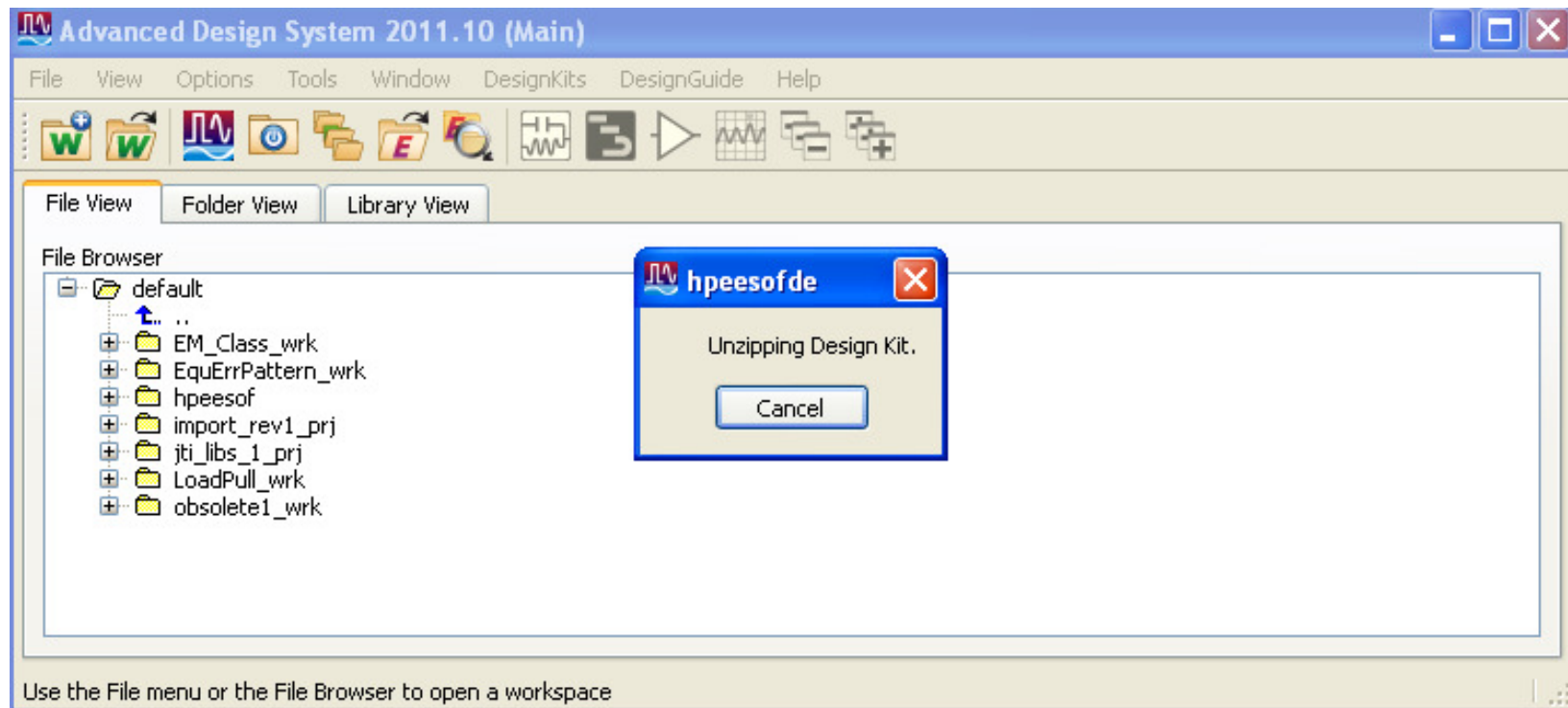
Select Library to Import

- Select the desired library to import
- This example will use the JTI0805INDUCTORS_2011.7z library
- ADS will now ask “where” the user would like to unzip the library.
- Browse to the same folder where *.7z libraries are and select “Choose”
 - Do not select any files.



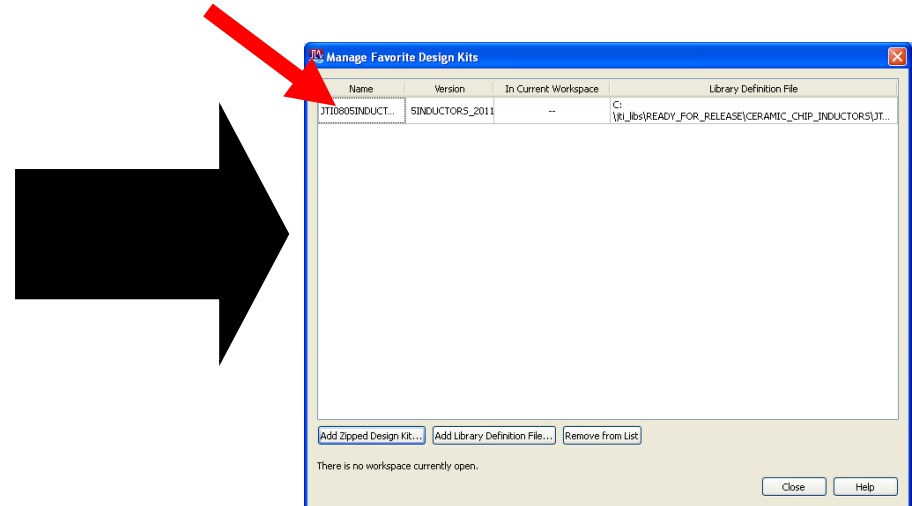
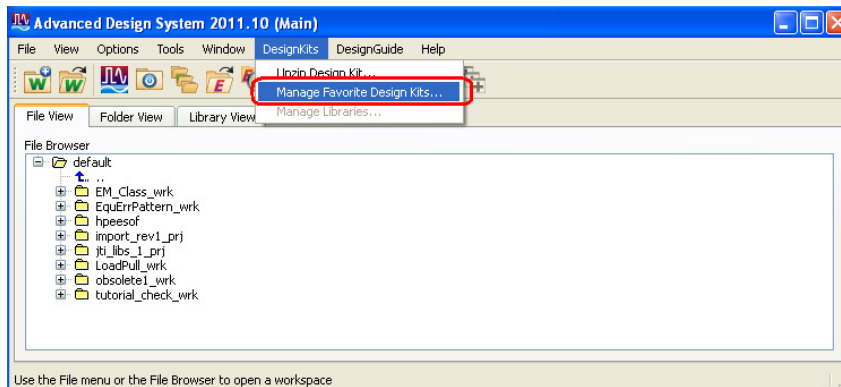
Unzipping

- Once the folder is selected by clicking on the “Choose” button an “Unzipping Design Kit.” prompt will appear.



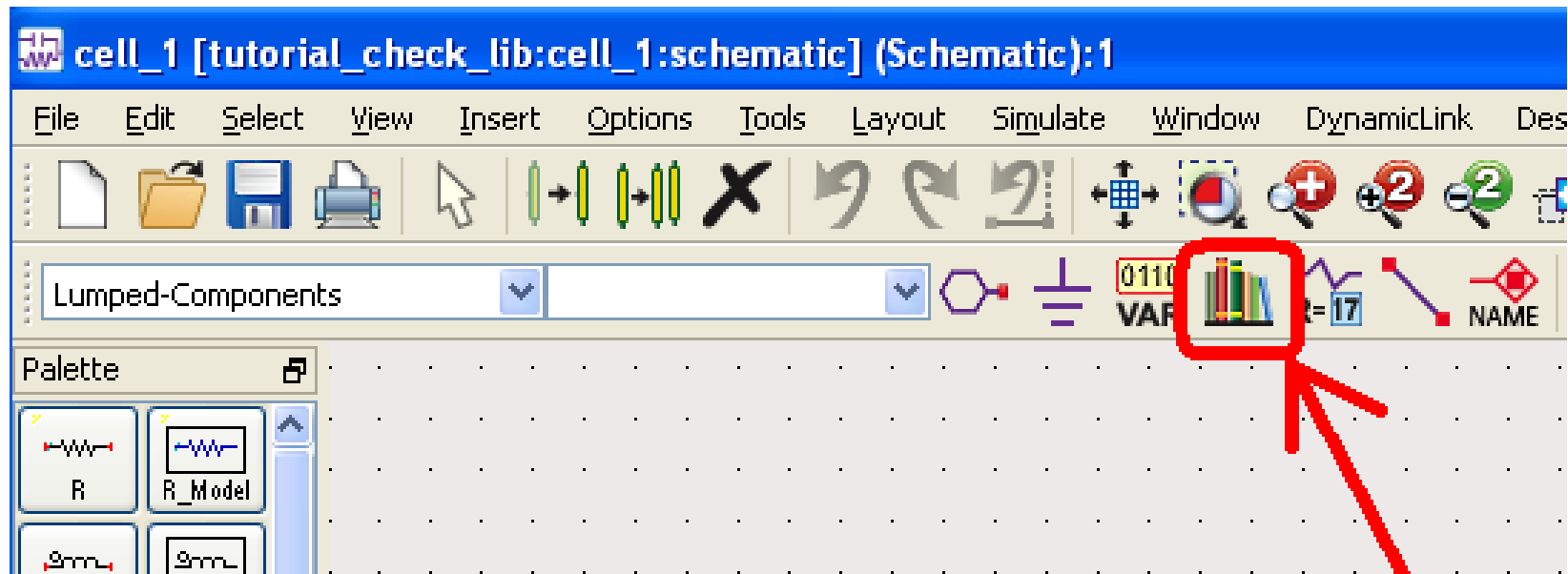
Checking Library

- Once library has completed unzipping, return to the Main window and click on DesignKits->Manage Favorite Design Kits.
 - The library which was unzipped should be listed. In this example the JTI 0805 Inductors library is shown.



Testing Johanson Technology Model

- Create a new workspace.
- Add a schematic
- Click on “Display Component Library List”



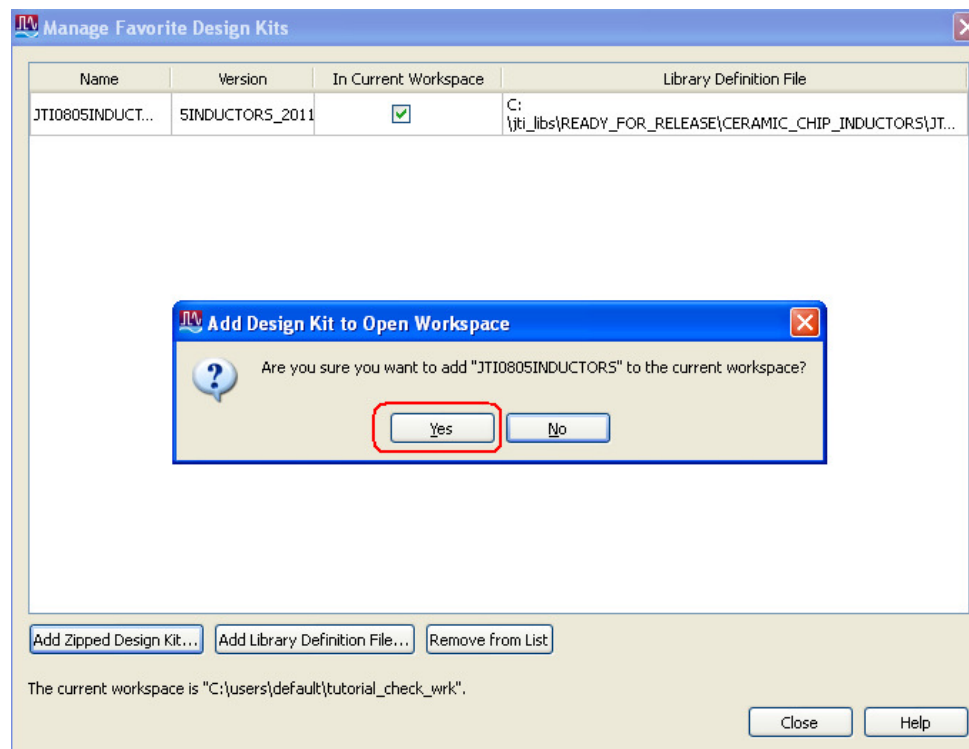
Make Libraries Visible In Schematic

- At times the newly import library will not be shown in the Component Library window.
- To fix this
 - Close the Component Library window
 - Go to the Main window
 - Click on DesignKits->Manage Favorite Design Kits
 - Check the “In Current Workspace” checkbox



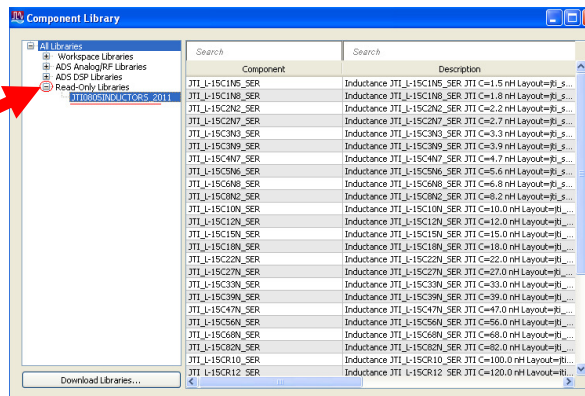
Adding Libraries to Current Workspace

- After checking “In Current Workspace” box a prompt will appear.
- Click “Yes” to add library to current workspace.



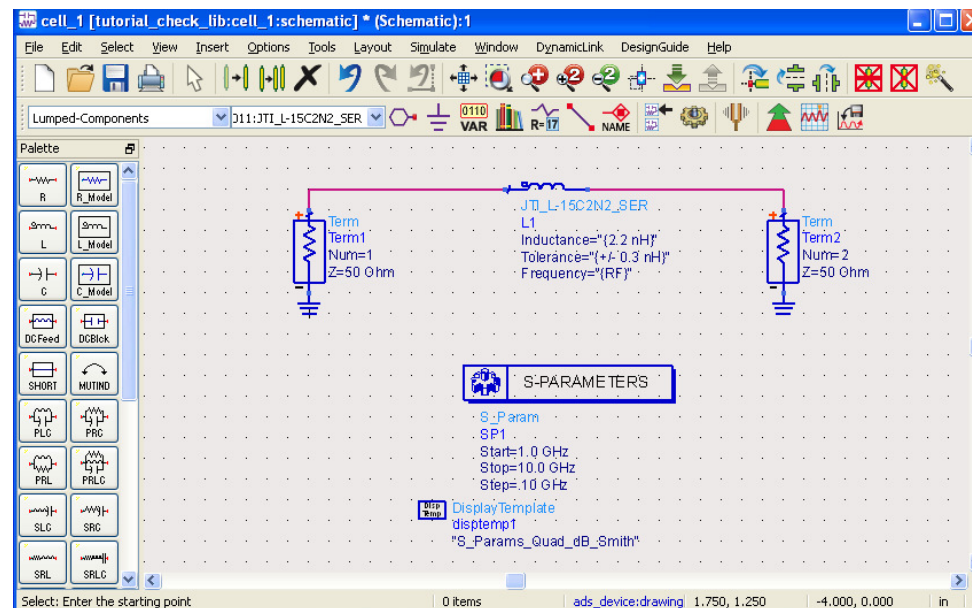
Test Library In Schematic

- Close the “Manage Favorite Design Kits” window
- Go back to the open schematic
- Click on “Display Component Library” icon
- Libraries should be in the “Read-Only Libraries” category. Expand if necessary



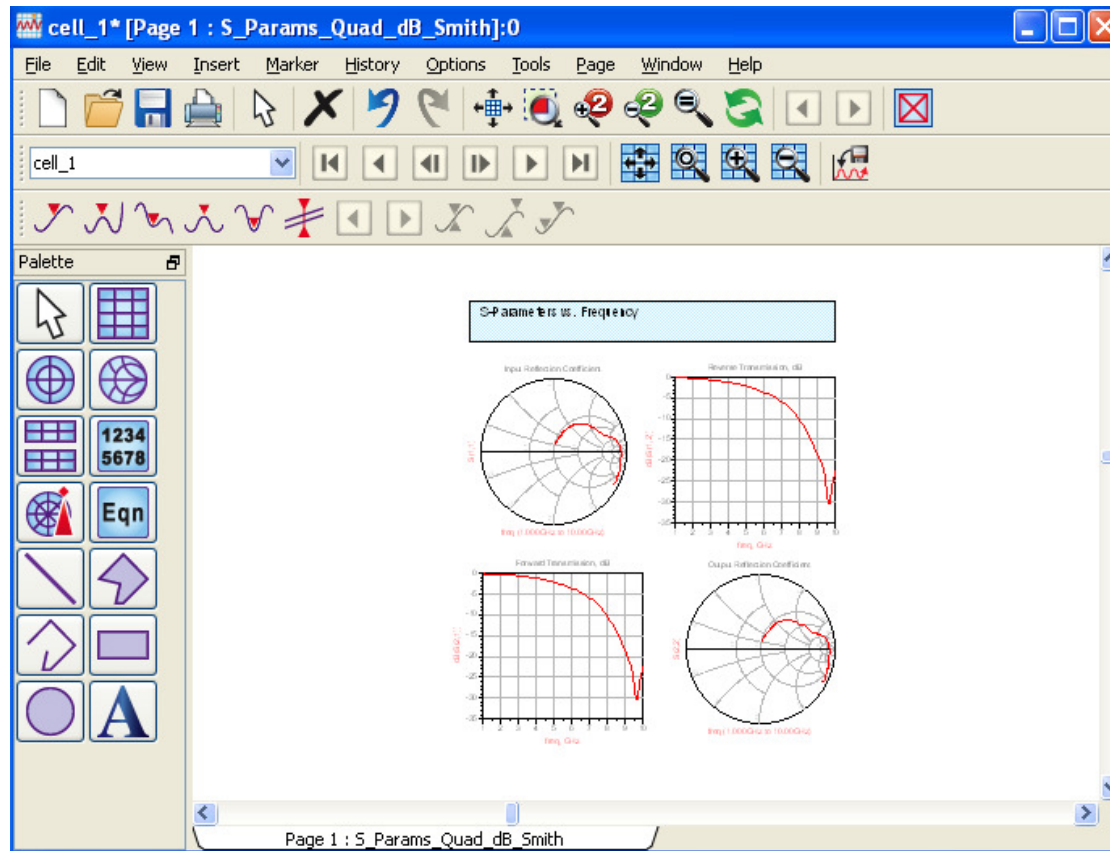
Simulating Library Component in Schematic

- Add a S_Params template
- Click on Component Library List icon, add a L-15C2N2_SER inductor to the schematic and wire in to s-parameter template.



Library S-Parameter Simulation and Plots

- Simulate the S-Parameter template with the Johanson Technology inductor and the following plots should appear.



The use of a Johanson Technology model has now been verified.

Useful Links

- Johanson Technology Technical Support

- [Ask a Technical Question](#)

- (<http://www.johansontechnology.com/component/techquestion/?Itemid=407>)

- Agilent EEsof Technical Support

- eesof_support@agilent.com

- Agilent Knowledge Center

- <https://edasupportweb.soco.agilent.com/>